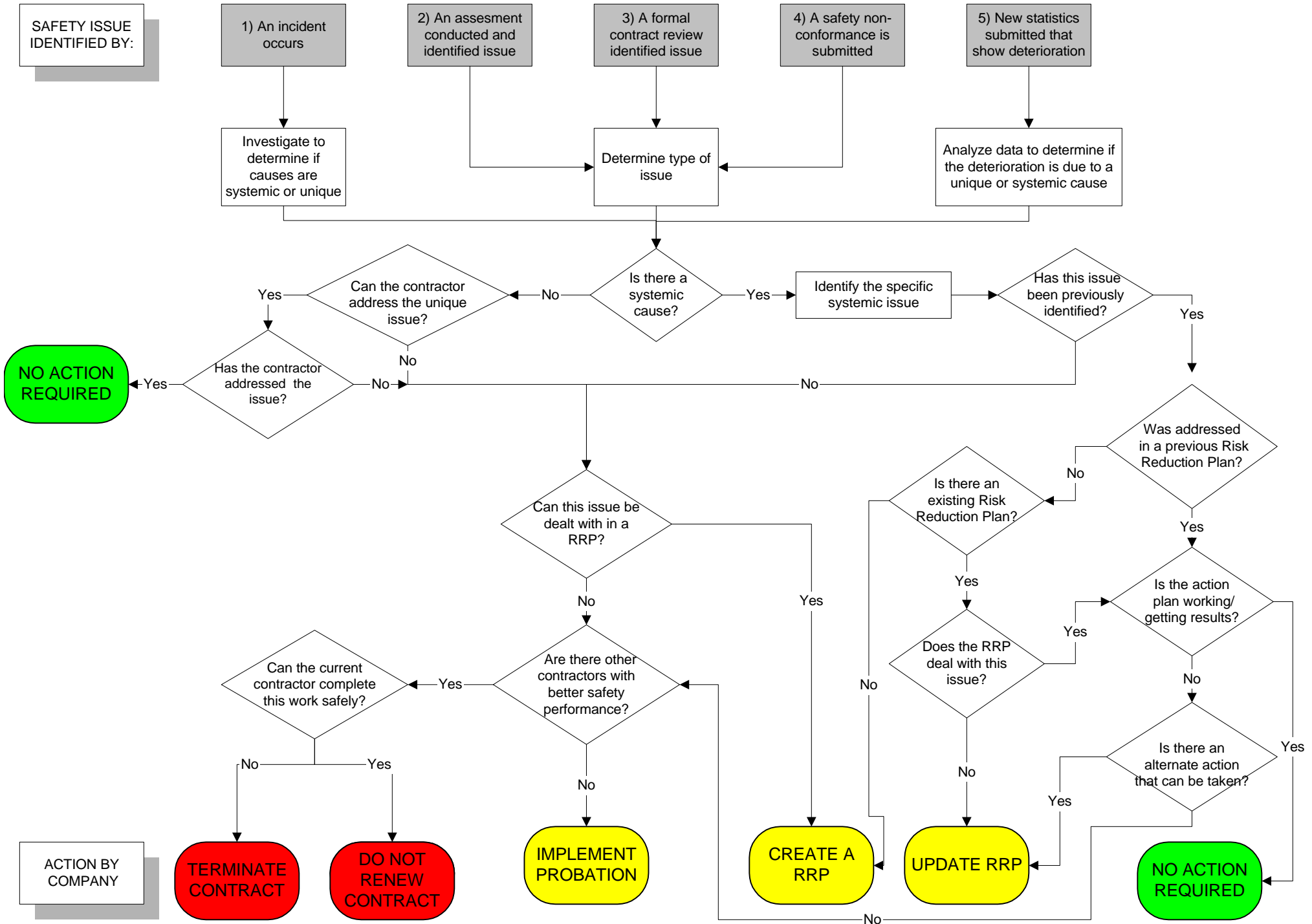


ASSESSING CONSEQUENCES FOR CONTRACTOR SAFETY PERFORMANCE



SAFETY ISSUE IDENTIFIED BY:

- 1) An incident occurs
- 2) An assesment conducted and identified issue
- 3) A formal contract review identified issue
- 4) A safety non-conformance is submitted
- 5) New statistics submitted that show deterioration

Investigate to determine if causes are systemic or unique

Determine type of issue

Analyze data to determine if the deterioration is due to a unique or systemic cause

NO ACTION REQUIRED

TERMINATE CONTRACT

DO NOT RENEW CONTRACT

IMPLEMENT PROBATION

CREATE A RRP

UPDATE RRP

NO ACTION REQUIRED

ACTION BY COMPANY