

2018

# LIFE SAVING RULES

Toolbox Talk

Driving



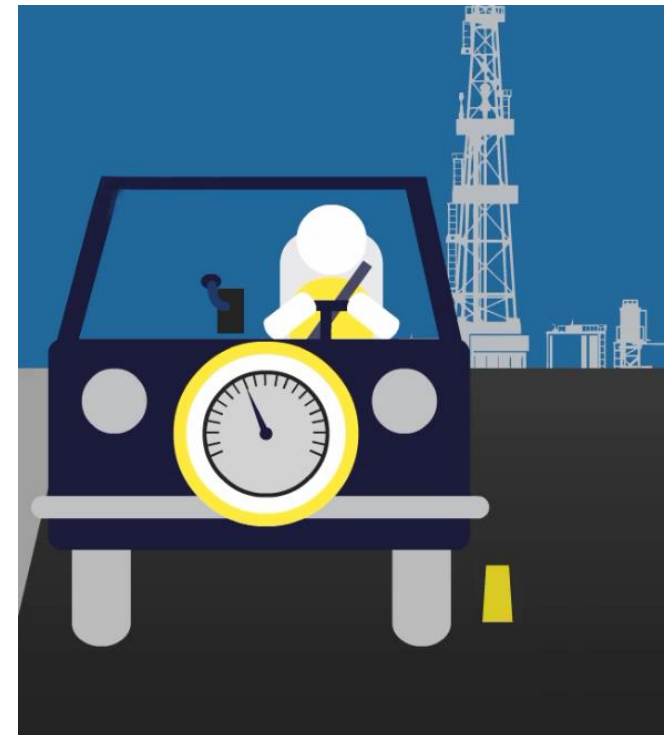
SETTING THE STANDARD IN OIL AND GAS SAFETY

ENERGY  
SAFETY  
CANADA

# OUTLINE

---

- ▶ 10 Life Saving Rules
- ▶ Description of Driving Rule
- ▶ Roles & Responsibilities
- ▶ Example Violations
- ▶ Related Life Saving Rules
- ▶ Summary



# ENERGY SAFETY CANADA'S 10 LIFE SAVING RULES



**CONFINED SPACE**



**WORKING AT HEIGHT**



**WORK AUTHORIZATION**



**ENERGY ISOLATION**



**LINE OF FIRE**



**BYPASSING SAFETY CONTROLS**



**DRIVING**



**HOT WORK**



**SAFE MECHANICAL LIFTING**



**FIT FOR DUTY**

## DRIVING RULE

---

### ▶ Follow safe driving rules

- ▶ I always wear a seatbelt
- ▶ I do not exceed the speed limit, and reduce my speed for road conditions
- ▶ I do not use phones or operate devices while driving
- ▶ I am fit, rested and fully alert while driving
- ▶ I follow journey management requirements



## AS A SUPERVISOR

---

- ▶ I ensure workers are competent drivers for the environmental conditions anticipated with their work
- ▶ I ensure vehicles are fit for purpose and adequately maintained
- ▶ I ensure a journey management plan is created

## AS A DRIVER

---

- ▶ I always wear a seatbelt and do not move the vehicle until all passengers have their seat belts on
- ▶ I do not speed and I reduce speed for the road conditions such as when there is traffic congestion, adverse weather, etc.
- ▶ I do not use electronic devices to send or receive communications while driving unless otherwise authorized
- ▶ I obey the rules of the road

## AS A DRIVER - CONTINUED

---

- ▶ I ensure equipment and materials in the vehicle are secured so they are not a distraction or a line of fire hazard to the driver or passengers in the event of an incident
- ▶ I know when a journey management plan is required and follow that plan
- ▶ I conduct pre-trip inspections of the vehicle
- ▶ I take the required rest breaks and ensure I am fully alert (fit for duty) and working within the allowable hours of service
- ▶ I stop and reassess if conditions change, such as weather

## EXAMPLE VIOLATIONS

---

- ▶ A seat belt is not worn by the driver or a passenger while the vehicle is in motion
- ▶ The vehicle is traveling over the speed limit
- ▶ The driver uses an unauthorised electronic device while the vehicle is in motion
- ▶ The cab of a vehicle contains equipment or materials that are not secured
- ▶ The passengers in the vehicle are distracting the driver



## EXAMPLE VIOLATIONS

---

- ▶ The journey management plan identifies unacceptable risk from extreme weather and the journey is conducted anyway
- ▶ The pre-trip inspection identifies an unacceptable vehicle condition, but the trip is conducted anyway
- ▶ The driver has exceeded the allowable hours of service
- ▶ Conditions change during the journey when an extreme weather storm moves in and the driver does not stop and reassess the journey

## RELATED LIFE SAVING RULES



**BYPASSING  
SAFETY  
CONTROLS**



**LINE OF FIRE**



**FIT FOR DUTY**



**HOT WORK**

## SUMMARY

---

- ▶ Know your role and responsibilities in relation to the Driving rule
- ▶ Notify your supervisor immediately if you are unsure about how to comply with this rule in your work environment
- ▶ If you see a potential violation of the Driving rule, intervene – it could be the last chance to prevent a fatality
- ▶ Consistent application of the Life Saving Rules equates to saved lives
- ▶ These rules are essential to achieving industry's shared vision: zero injuries, zero incidents

# QUESTIONS?