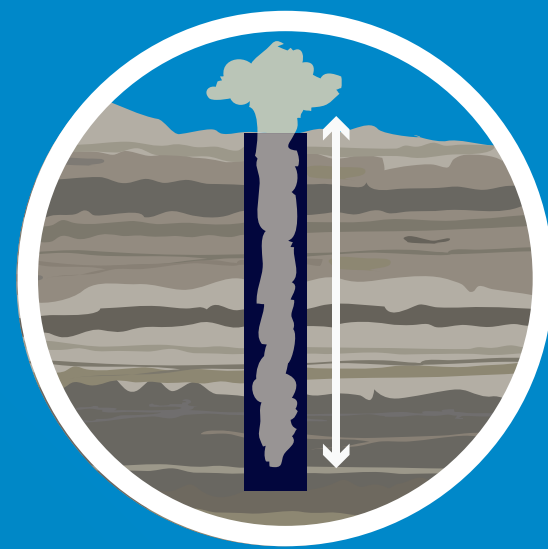
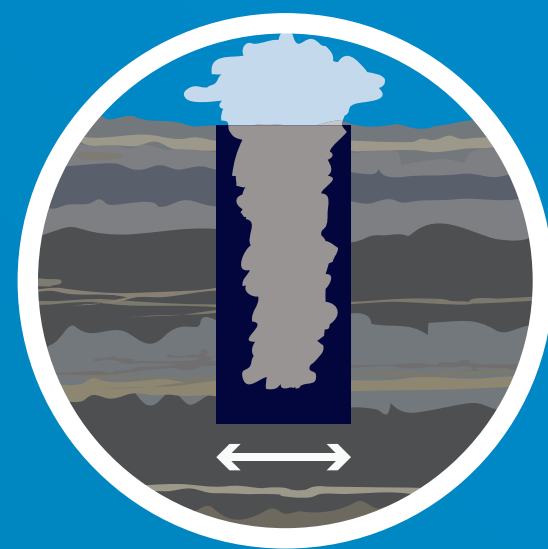


# SILICA DUST: SEISMIC IT WILL TAKE YOUR BREATH AWAY!

## SILICA RISK FACTORS



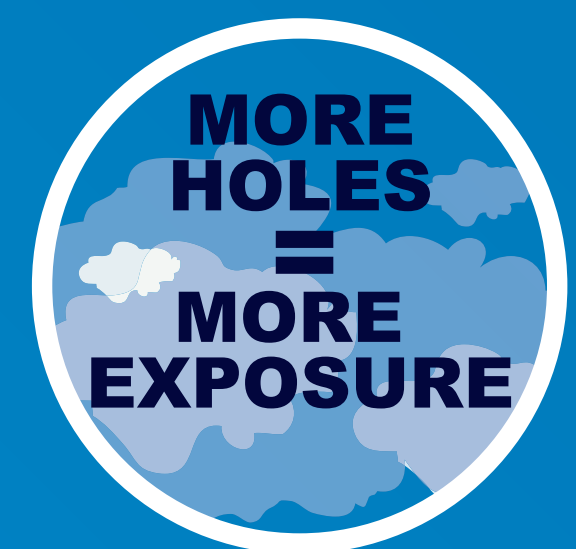
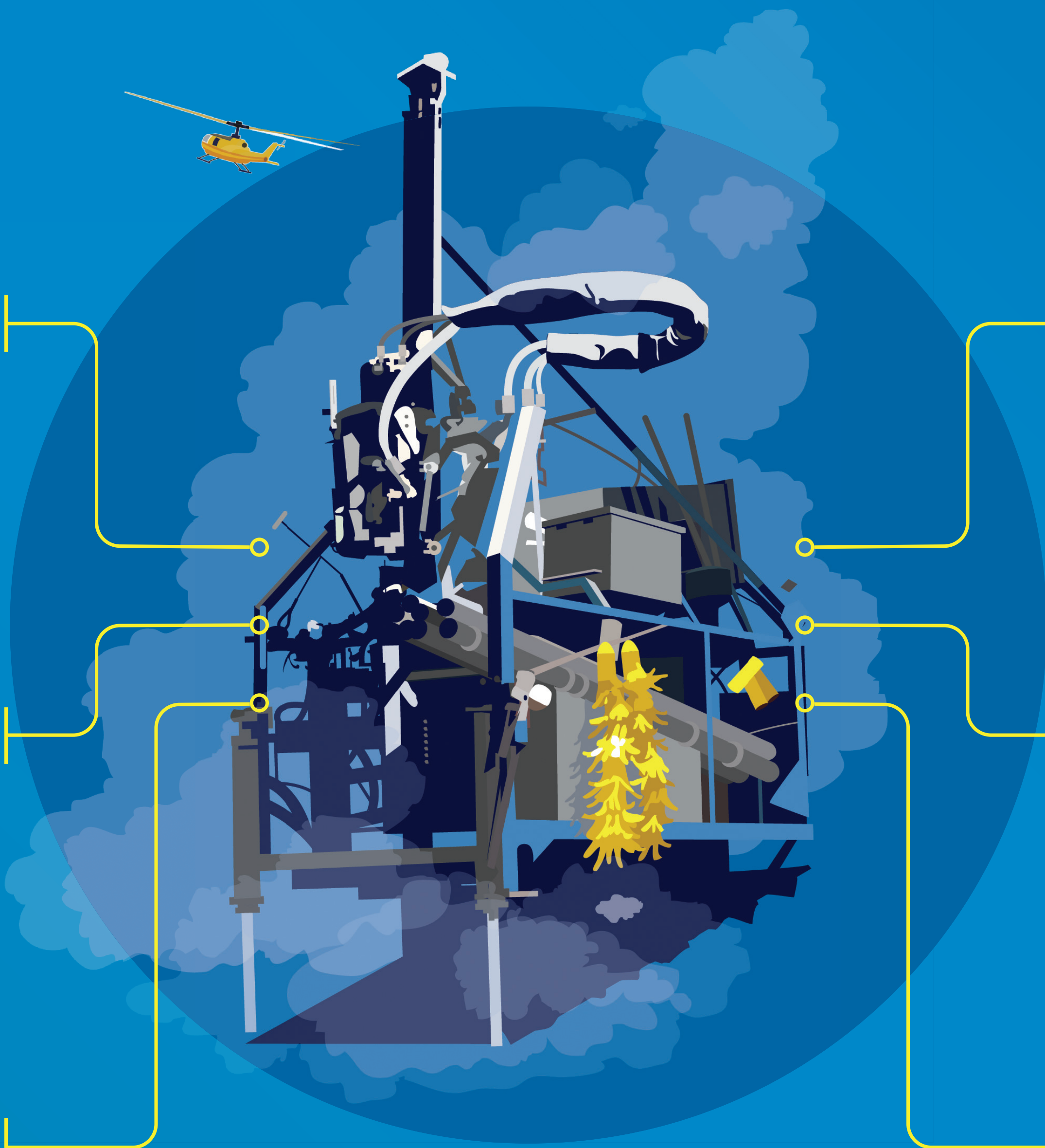
HOLE DEPTH



DIAMETER OF HOLE



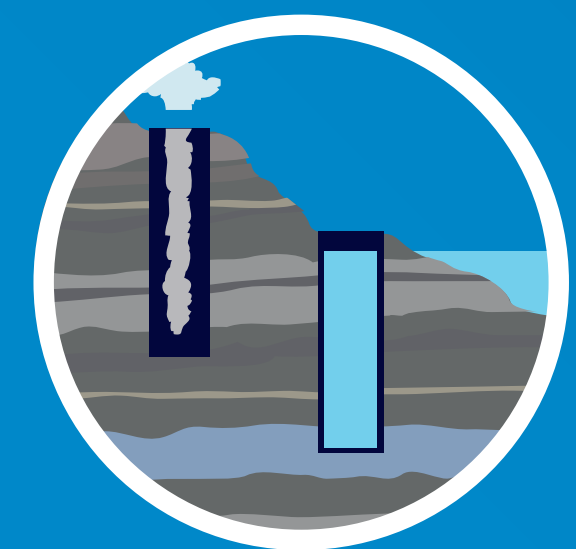
EXPOSED ROCK/QUARTZ %



NUMBER OF HOLES IN A DAY



NATURAL VENTILATION



NATURALLY DRY AND WET HOLES

## WHAT IS SILICA



Crystalline (Quartz)  
Found in rock, sand, cement



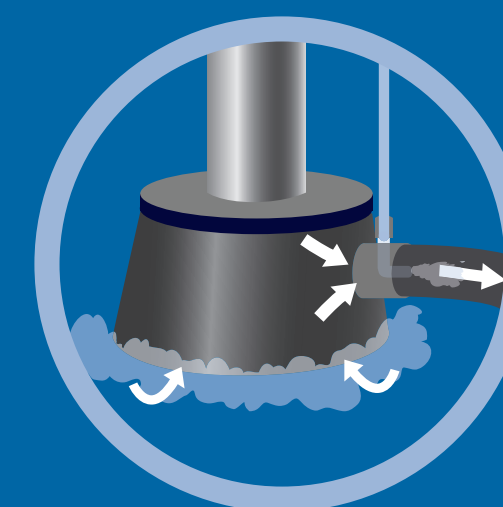
Visible Dust



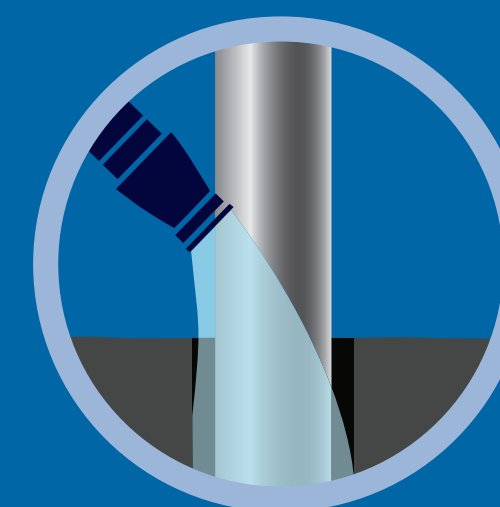
Crystals in Lungs

Silica is a naturally occurring mineral found in sand, rock and dry mixable products. Silica is hazardous when it is inhaled, often as a dust. When silica dust is visible, overexposure is often just a matter of time without safety measures. The health effects are typically not felt right away, but years later.

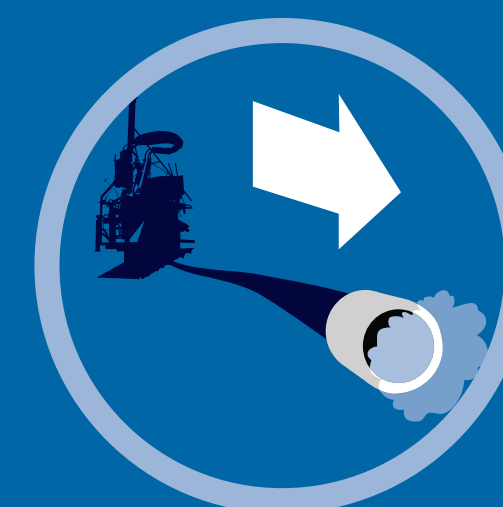
## SAFETY MEASURES



Dust Capture



Water Injection



Hose Downwind



Respirators

## ROCK DUST, A FAMILIAR FOE

When you're hanging off the side of a mountain trying to drill a seismic hole, often the last thing on your mind is dust. However, being safe includes everything, not just what might affect you today, but what might affect you in the future. This is why understanding and controlling exposure to rock dust is so important. - Seismic Driller

**ENERGY  
SAFETY  
CANADA**